

DISTRIBUTED BY:

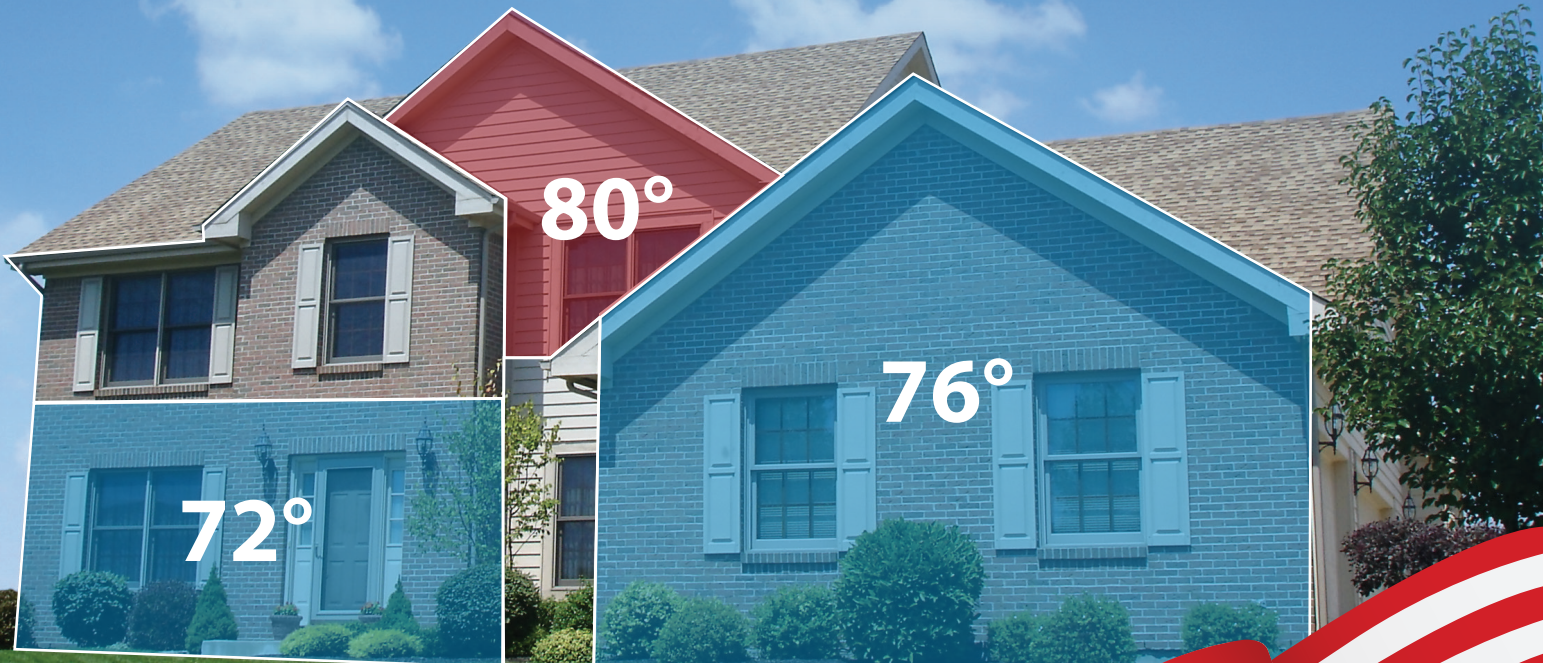
**JACKSON**  
SYSTEMS & SUPPLY



HVAC Controls

# ZONE CONTROL MADE SIMPLE

*Zoning and Damper Selection Guide*



888.359.0362 • [www.iohvaccontrols.com](http://www.iohvaccontrols.com)

*Thank you  
for supporting  
American jobs*

# ESP ZONE PANELS

## 2 Zones



**NO BYPASS  
REQUIRED!**

**ZP2-HC-ESP** (1 Heat / 1 Cool)

## 3 Zones



**NO BYPASS  
REQUIRED!**

**ZP3-HCMS-ESP** (Up to 2 Heat / 2 Cool)  
**ZP3-HPS-ESP** (Up to 3 Heat / 2 Cool,  
Heat Pump or Dual Fuel)

## 4 Zones



**NO BYPASS  
REQUIRED!**

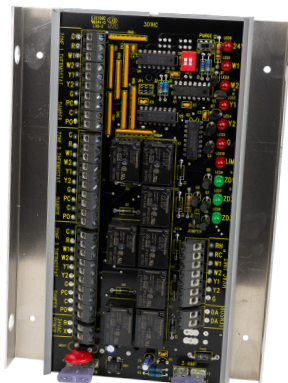
**ZP4-ESP** (Up to 3 Heat / 2 Cool,  
Heat Pump or Dual Fuel)

All of our ESP zone panels are equipped with our award-winning electronic static pressure control technology. As zone dampers open and close, the static pressure sensor continuously monitors the system static pressure. If the static pressure goes above the static pressure setpoint, the panel will open the non-calling zones just enough to relieve the excess pressure and bring the system below the desired setpoint. This eliminates the need for a bypass damper. *The static pressure sensor is included.*

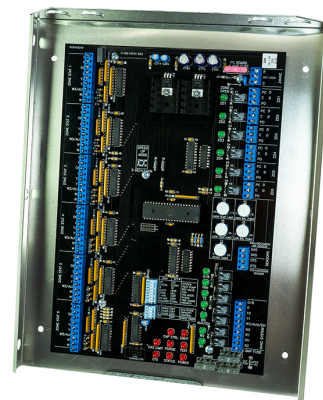
# STANDARD ZONE PANELS



**ZP2-HC** (1 Heat / 1 Cool)



**ZP3-HCMS** (Up to 2 Heat / 2 Cool)  
**ZP3-HPS** (Up to 3 Heat / 2 Cool,  
Heat Pump or Dual Fuel)



**ZP6** (Up to 3 Heat / 2 Cool,  
Heat Pump or Dual Fuel)

***All zone panels have a 10 year warranty***



# 6 Zones



**NO BYPASS  
REQUIRED!**

**ZP6-ESP**

(Up to 4 Heat / 2 Cool,  
Heat Pump or Dual Fuel)

## ZONE PANEL FEATURES

	ZP2-HC	ZP3-HCMS	ZP3-HPS	ZP4-ESP	ZP6
NUMBER OF ZONES	2	3	3	4	6
EXPANDABLE TO					12
HEAT / COOL PANEL	✓	✓		✓	✓
HEAT PUMP PANEL			✓	✓	✓
HEATING STAGES	1	2	3	3	3*
COOLING STAGES	1	2	2	2	2
STAGING BY THERMOSTAT		✓	✓	✓	✓
STAGING BY TIMER					✓
CAPACITY CONTROL				✓	✓
BUILT-IN DUAL FUEL KIT			✓	✓	✓
AUTO CHANGEOVER	✓	✓	✓	✓	✓
FIRST CALL PRIORITY	✓	✓	✓	✓	
COOLING PRIORITY					✓
MAJORITY WINS PRIORITY					✓
TIME SHARE	✓	✓	✓	✓	✓
HI / LOW LIMIT SENSOR	✓	✓	✓	✓	✓
INDEPENDENT FAN MODE	✓	✓	✓	✓	✓
SYSTEM STATUS LEDS	✓	✓	✓	✓	✓
SHORT CYCLE PROTECTION	✓	✓	✓	✓	✓
PURGE CYCLE		✓	✓	✓	✓
2-WIRE DAMPERS	✓	✓	✓	✓	✓
3-WIRE DAMPERS <small>MUST BE USED WITH ESP PANELS</small>	✓	✓	✓	✓	✓
DOUBLE FUSED	✓	✓	✓	✓	✓
10 YEAR WARRANTY	✓	✓	✓	✓	✓

## Additional Products



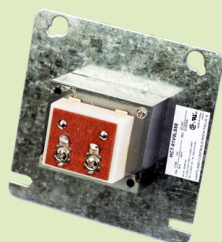
**Discharge and  
Return Air Sensor**

ZPA-DTS



**Outdoor  
Temperature  
Sensors**

ZPA-OTS  
ZP3-OTS



**Transformers**

TR-40 (40VA)  
TR-75 (75VA)

\*6 zone ESP panel has up to 4 heating stages

# DAMPER SELECTION GUIDE



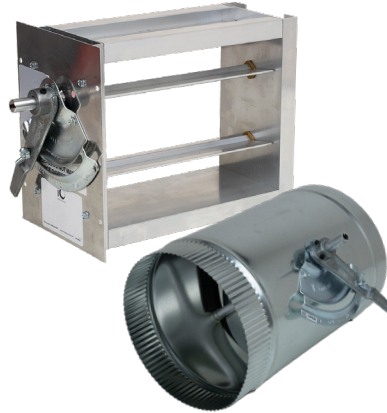
Compatible with all standard zone boards

## D/HD SERIES ZONE DAMPERS

• 5 year warranty

- D-XX
- 4" to 20"
- HD-XXXX
- 6" x 6" to 36" x 20"
- Side mount and bottom mount

HD-Motor  
2-wire PC/SO  
(10VA)  
30 Second Timing



## MBD SERIES (MANUAL BALANCING) DAMPERS

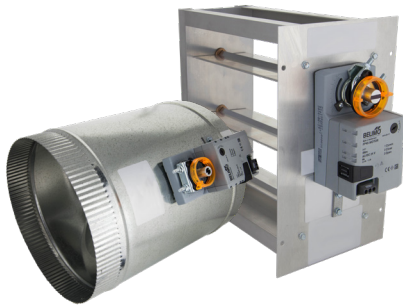
• 5 year warranty

- MBD-XX
- 6" to 20"
- MBD-XXXX
- 6" x 6" to 36" x 24"
- Side mount and bottom mount
- Custom sizes available upon request

**WE ALSO CARRY FULL LINES OF ELECTRONIC AND BAROMETRIC BYPASS DAMPERS**



*Equipped with Belimo actuators- the industry's best*



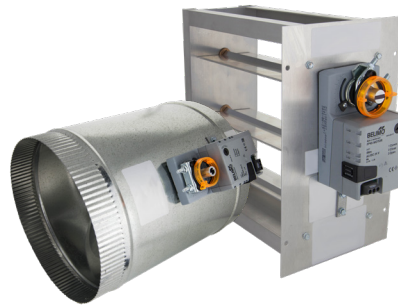
Compatible with all ESP zone boards and standard zone boards

## MD SERIES (MULTI-PURPOSE) ZONE DAMPERS

• 5 year warranty

- MD-XX
- 4" to 20"
- MD-XXXX
- 6" x 6" to 36" x 24"
- Side mount and bottom mount

Belimo FP18-Motor  
3-wire PC/PO, floating point  
(2.5VA)  
60 Second Timing



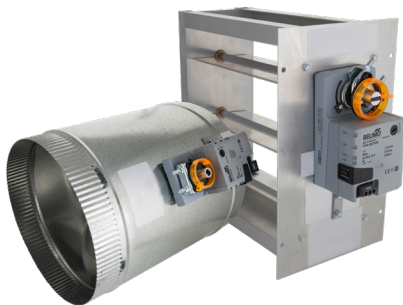
Compatible with Carrier® Infinity® and Bryant® Evolution® systems

## CARRIER® ZONE DAMPERS

• 10 year warranty

- CD-XX
- 4" to 20"
- CD-XXXX
- 6" x 6" to 36" x 24"
- Side mount and bottom mount

Belimo CD-Motor  
3-wire PC/PO, floating point  
(2.5VA)  
15 Second Timing



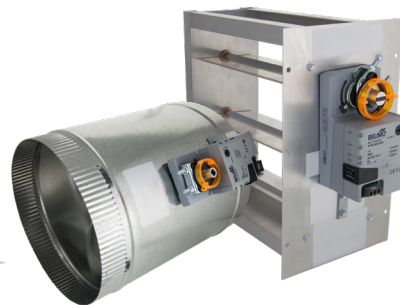
Compatible with Trane® ComfortLink™ II and American Standard® AccuLink™ systems

## TRANE® ZONE DAMPERS

• 10 year warranty

- TD-XX
- 4" to 20"
- TD-XXXX
- 6" x 6" to 36" x 24"
- Side mount and bottom mount

Belimo TD-Motor  
3-wire PC/PO, floating point  
(1.5VA)  
60 Second Timing



Compatible with Rheem® and Ruud® Econet® systems

## RHEEM® ZONE DAMPERS

• 10 year warranty

- RM-XX
- 4" to 20"
- RM-XXXX
- 6" x 6" to 36" x 24"
- Side mount and bottom mount

Belimo RM-Motor  
3-wire PC/PO, floating point  
(2.5VA)  
35 Second Timing



Compatible with all ESP zone boards and standard zone boards

## RETROFIT ZONE DAMPERS

- 5 year warranty
- Ask about options compatible with specialty systems

- RD-XX
- 5" to 10"

Belimo FP18-Motor  
3-wire PC/PO, floating point  
(2.5VA)  
60 Second Timing



Compatible with all ESP zone boards and standard zone boards

## REGISTER BOOT DAMPER

• 5 year warranty

- RBD-XX
- 6", 8"

Belimo FP18-Motor  
3-wire PC/PO, floating point  
(1.5VA)  
35 Second Timing