

If you are servicing Carrier/ICP branded equipment, you can now access the most popular Carrier/ICP replacement parts from your local distributor.

White-Rodgers offers competitive pricing on Direct OEM replacement parts for furnaces, air handlers, heat pumps and condensing units. These controls are drop-in replacements with Carrier/ICP mounting and wiring, but are uniquely designed to maximize applications for increased cross references while adding features to optimize design elements.

We also offer Universal controls that replace hundreds of Carrier/ICP branded parts numbers. The extensive cross reference for both Carrier and ICP part numbers can be found on the packaging and in the White-Rodgers mobile app.

(Refer to the back cover for download instructions regarding the WR Mobile app).

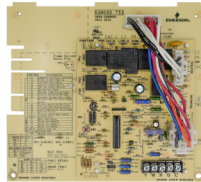


CARRIER/ICP Replacements for Furnaces

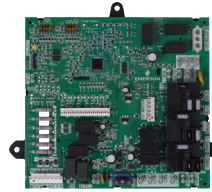
Furnace Controls



- Reduce SKUs, replaces 5 Carrier controls
- Advanced diagnostics with tri-color LED and push button fault recall



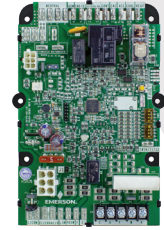
- Utilizes modern ignition electronics
- Advanced diagnostics with tri-color LED and push button fault recall



- Reduce SKUs, replaces 4 Carrier controls
- Replaces PSC, variable speed & ECMx
- Harness included to replace ICP applications



- Designed for Carrier mounting
- Factory Wiring plugs directly into the control without harnesses



- Tri-Color LED displays status and fault codes
- Six holes for either 2 or 4 hole mounting

Model Number	50M56U-751	50M56D-751	21V51D-751	50X57-843	50F06-843
Replacement Type	Carrier/ICP	Carrier/ICP	Carrier/ICP	Universal	Universal
Stages	Single Stage	Single Stage	Two-Stage	Single Stage	Non-Integrated Electronic Fan Timer
Ignition Type	HSI	HSI	HSI	HSI	HSI-pilot, DSI
Ignition Voltage	120 VAC	120 VAC	120 VAC	120 VAC	—
Blower Motor Type	PSC	PSC	PSC, Variable Speed or ECMx	ECMx	PSC
Cross References	1172550, 1183599, 1184594, 1184783, 1186024, 1186115, 325878-751, CEPL130437-01, CEPL130437-01-1, CEPL130438-01, CEP130590-01, CEPL131004, CEPL131004-02, CEPL131004-20, CEPL131004-20-ICP, CEPL131012-01, CEPL131012-01-1, CEPL131012-02, CEPL131012-02-1, CEPL131012-20, HK42F004, HK42F007, HK42F008, HK42F009, HK42F011, HK42F013, HK42F016, HK42F018, HK42F034, HK42F036, HK42F045, HK42F061, HK42F062	784-83-10H, 784-9-I, CESO110020, CESO11048, CESO110057-00, CESO110057-01, CESO110057-02, HH84AA016, PCB1201-2A	1172551, 1172809, 1172551, 1184408, 325879-751, CEPL130455-01, CEPL130591-01, CEPL130591-41, CEPL130948-01, CEPL130948-02, CEPL131043-01, HK42FZ005, HK42FZ010, HK42FZ015, HK42FZ017, HK42FZ019, HK42FZ020, HK42FZ028, HK42FZ040, HK42FZ041	1183386, 1184412, CEPL130934-01, CEPL130934-02, CEPL131011-01, CEPL131011-02, HK42FZ027, HK42FZ033, HK42FZ039, HK42FZ047	1008773, 1008786, 1009836, 1009837, 1009838, 1010031, 1011179, 1011543, 1011927, 1012106, 1012358, 1014460, 1084197, 1150489, 1160192, 1170063, 1138-83, 200A, 1138-200, CAR20054502, HQ1008773HW, HQ1008786HW, HQ1009836HW, HQ1009837HW, HQ1009838HW, HQ1010031HW, HQ1011179HW, HQ1011543HW, HQ1011927HW, HQ1012106HW, HQ1012358HW, HQ1084197HW, HQ1170063HW

CARRIER/ICP Replacements for Furnaces

Gas Valves



- LP conversion kit included



- LP conversion kit included



- LP conversion kit included
- Reducer bushing kit included

Model Number

36J24-614

36J55-614

36C94-303

Application	HSI/DSI	HSI/DSI	Cycle Pilot
Stages	Single Stage	Two-Stage	Single Stage
Opening Type	Slow Opening	Slow Opening	Fast Opening
Pipe Size	1/2" x 1/2"	1/2" x 1/2"	3/4" x 3/4"
Flow Direction	90° Bottom Outlet	90° Bottom Outlet	Straight Thru
Cross References	EF32CW206, EF32CW210	EF33CW180, EF33CW192	1162470, EF32CB197A, EF32CB198A, EF32CW183, EF32CW183A, EF32CW233, EF32W184,

Flame Sensors



- 3-year limited warranty
- High temperature rod withstands 2200°F

Model Number

790-751A1

Material	OEM approved material
Shape	73° Bend
Cross References	1172827, 1179161, 1190383, 1176920, 1184322, LH680534, LH33WZ511, LH33WZ515, LH33WZ517, LH680012, LH680014, LH33WZ520, LH33WZ521

Ignitors



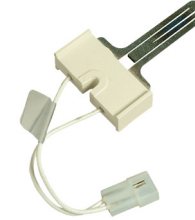
- 3-year limited warranty
- Carrier/ICP connectors for fast replacement



- 3-year limited warranty
- Upgrade carbide to nitride for 33-1/3" furnaces



- 3-year limited warranty
- Upgrade carbide to nitride for 40" furnaces



- 1-year limited warranty
- OEM material and construction

Model Number

789A-751A1

789A-751KT1

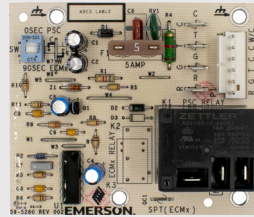
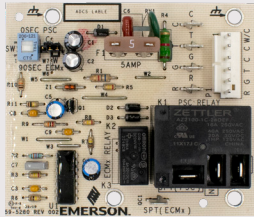
789A-751KT2

767A-370

Type	Nitride	Nitride	Nitride	Carbide
Voltage	120 VAC	120 VAC	120 VAC	120 VAC
Lead Length	9.25"	9.25"	9.25"	5.25"
Cross References	1176919, 50PK74, LH33ZG001	331930-751, LH33ZS001, LH33ZS001A, LH33ZS002, LH33ZS002A, LH33ZS003, LH33ZS003A, LH33ZS004 (33-1/3" furnaces)	332505-751, LH33ZS001, LH33ZS001A, LH33ZS002, LH33ZS002A, LH33ZS003, LH33ZS003A, LH33ZS004 (40" furnaces)	1380654, 1380672, 1380680, LH33ZS001, LH33ZS001A, LH33ZS002, LH33ZS002A, LH33ZS003, LH33ZS003A, LH33ZS004

CARRIER/ICP Replacements for Air Handlers

Air Handler Controls



- Reduce inventory by configuring for either PSC or ECMx
- Factor wiring for inline connector or spade terminals
- Factory wiring for inline connector or spade terminals
- Dipswitch selectable blower off delay

Model Number

48M55-751

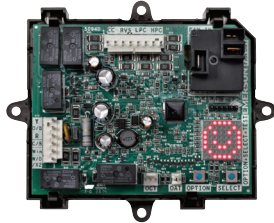
48P55-751

Model Number	48M55-751	48P55-751
Stages	Single Stage	Single Stage
Blower Motor Type	PSC or ECMx	PSC
Cross References	1005-83-166A, 1172975, 1171734, CEPL130541-01, CEPL130658-01-1, CES0130003-01, HK61EA002, HK61EA006, HK61EA010	1005-83-166A, 1171734, CEPL130541-01, CES0130003-01, HK61EA002, HK61EA006



CARRIER/ICP Replacements for Heat Pumps & Condensing Units

Universal Defrost Control



- Selectable demand or timed defrost
- One-button configures to Carrier system
- Brownout & short-cycle protection

Model Number 47D01U-843

Stages	Single Stage
Fan Motor Type	PSC
Cross References	1050-83-7B, 1084-83-100A, 1085843, 1087515, 1160717, 1171803, 1173425, 1173696, 1177927, 1185790, 150-83-6A, 621-500, 621-505, 621-509, 621-83-550D, 621-83-550H, 621-83-550L, 621-xxx, CEBD410104-02, CEBD430524-22, CEBD430524-24A, CEPL110104-02, CEPL130433-01, CEPL130433-02, CEPL130524-21, CEPL130524-22, CEPL130547-01, CES0110063-00, CES0110063-01, CES0110063-02, CES0110063-02A, CES0130024-00, CES0130024-01, CES0130049-00, CES0130076, DDL-30011-ICP, DTL-300000-ICP, HK25SZ359A, HK32EA001, HK32EA003, HK32EA007, HK32EA008, HK32FA003, HK32FA006, HQ1052757EX, HQ1086070, HQ108671RC, HQ1087953RC, HQ1987953

Universal Contactor Upgrade



- Completely sealed to keep out pests and debris
- 5x traditional contactor life
- Brownout and short-cycle protection

Model Number 49P11-843

Input voltage	24 VAC, 50/60 Hz
Application	Up to 5 ton/40A, 1, 1.5 or 2 pole
Contacts	1 switched, 1 shunt
Cross References	1050699, 1050839, 1059574, 1091261, 1149650, 1150015, 1172472, 3100-15Q228, HN51CB024, HN51DC024, HN51JD024, HN51JD026, HN51KB024, HN51KC024, HN52KC024, HN52KD020, HN52KD025, HN52TC024, HN52TC040, P282-0311, P282-0321



10A
CAUTION
 This system contains high pressure R-410A refrigerant. Pressures may exceed the rated working pressure of R-22 service equipment. Refer to Product Information inside this panel Before Installing or Servicing this unit.
CAUTION
 Do not attempt to pump this system charge into another unit. For replacement, service, etc. Use only approved parts. The motor unit does not have enough internal strength to allow future damage.
PRECAUTION
 All service and repair work must be done by a qualified service technician. Do not have your customer do any work on the system unless they are properly trained and equipped. Lockout/tagout is required to prevent injury without your explicit permission. © 2011 Carrier

THE WHITE-RODGERS MOBILE APP:

Answers at your fingertips, with your smartphone or tablet.

- ✓ Latest cross reference
- ✓ Installation instructions
- ✓ Spec sheets
- ✓ Product selection

