

D AND HD SERIES ZONE DAMPERS
 5 year warranty
 D-XX, HD-XXXX, HD-XXXX-BM
 • 4" to 20"
 • 6" x 6" to 36" x 20"

HD-Motor
 2-wire PC/SO
 (10VA)
 30 Second Timing

Compatible with all standard zone panels



LD SERIES DAMPERS (MOTORIZED WITH LED)
 5 year warranty
 LD-XX, LD-XXXX, LD-XXXX-BM
 • 5" to 18"
 • 8" x 8" to 28" x 28"

LD-Motor
 3-wire PC/PO, floating point
 (2.0VA)
 60 Second Timing

Compatible with all ESP and standard zone panels



MD SERIES DAMPERS (MULTI-PURPOSE)
 5 year warranty
 MD-XX, MD-XXXX, MD-XXXX-BM
 • 4" to 20"
 • 6" x 6" to 36" x 24"

Belimo FP18-Motor
 3-wire PC/PO, floating point
 (2.5VA)
 60 Second Timing

Compatible with all ESP and standard zone panels



EZ-BD BYPASS DAMPER (BAROMETRIC WITH EASY ADJUSTMENT LEVER)
 3-wire
 5 year warranty
 EZ-BD-XX,
 • 6" to 14"

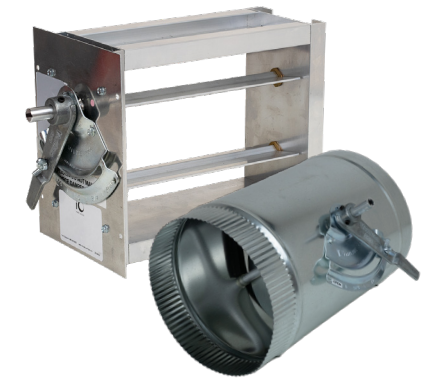
Compatible with all zone panels



EB SERIES DAMPERS (ELECTRONIC BYPASS)
 5 year warranty
 EB-XX, EB-XXXX, EB-XXXX-BM
 • 6" to 20"
 • 6" x 6" to 36" x 24"

Belimo FP18-Motor
 3-wire PC/PO, floating point
 (2.5VA)
 90 Second Timing

Compatible with all zone panels



MBD SERIES DAMPERS (MANUAL BALANCING)
 5 year warranty
 MBD-XX, MBD-XXXX,
 MBD-XXXX-BM
 • 6" to 20"
 • 6" x 6" to 36" x 24"
 • Custom sizes available upon request



CARRIER® ZONE DAMPERS
 10 year warranty
 CD-XX, CD-XXXX, CD-XXXX-BM
 • 4" to 20"
 • 6" x 6" to 36" x 24"

Belimo CD-Motor
 3-wire PC/PO, floating point
 (2.5VA)
 15 Second Timing

Compatible with Carrier® Infinity® and Bryant® Evolution® systems

TRANE® ZONE DAMPERS
 10 year warranty
 TD-XX, TD-XXXX, TD-XXXX-BM
 • 4" to 20"
 • 6" x 6" to 36" x 24"

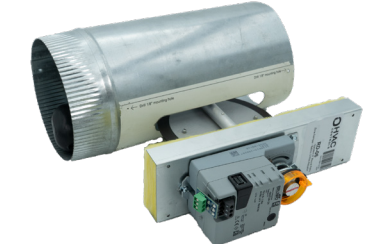
Belimo TD-Motor
 3-wire PC/PO, floating point
 (2.5VA)
 60 Second Timing

Compatible with Trane® ComfortLink™ II and American Standard® AccuLink™ systems

RHEEM® ZONE DAMPERS
 10 year warranty
 RM-XX, RM-XXXX, RM-XXXX-BM
 • 4" to 20"
 • 6" x 6" to 36" x 24"

Belimo RM-Motor
 3-wire PC/PO, floating point
 (2.5VA)
 35 Second Timing

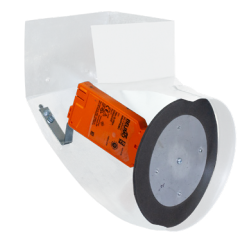
Compatible with Rheem® and Ruud® Econet® systems



RETROFIT ZONE DAMPERS
 5 year warranty
 • Ask about options compatible with specialty systems
 RD-XX
 • 5" to 10"

Belimo FP18-Motor
 3-wire PC/PO, floating point
 (2.5VA)
 60 Second Timing

Compatible with all ESP and standard zone panels



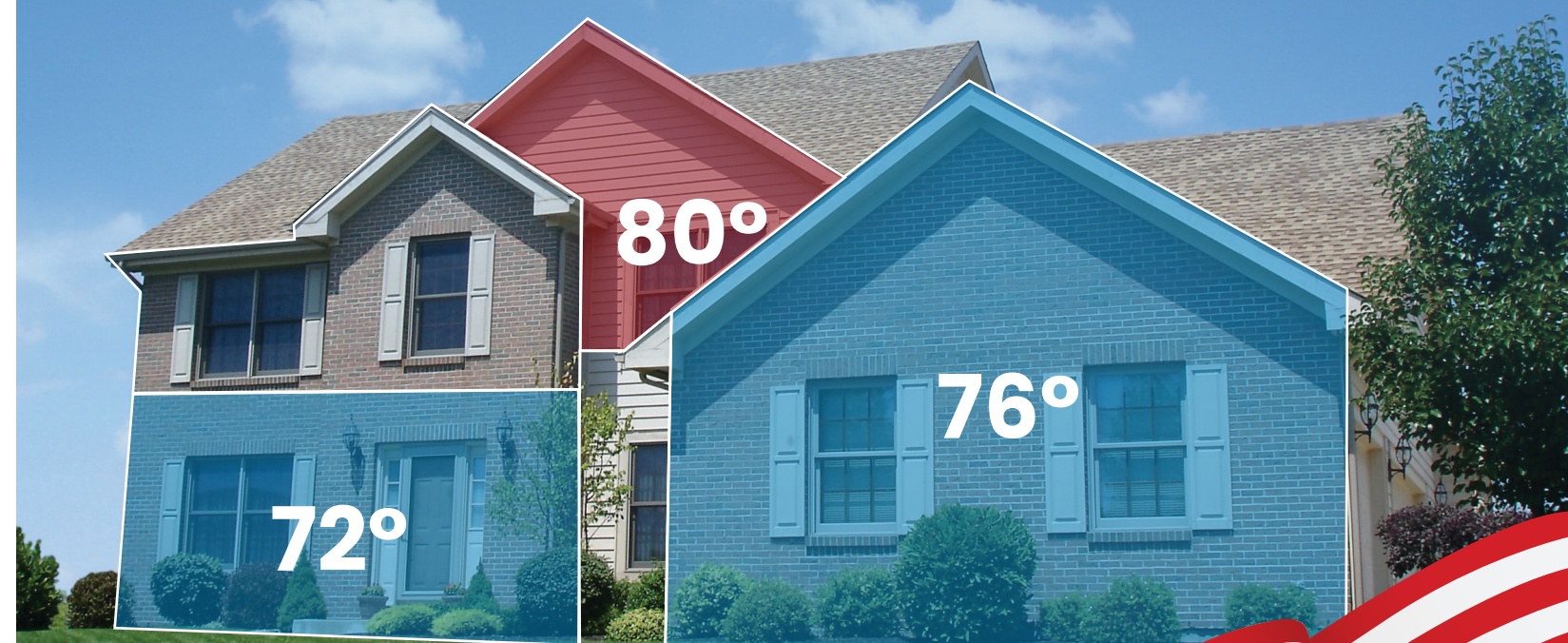
REGISTER BOOT DAMPER
 5 year warranty
 RBD-XX
 • 6", 8"

3-wire PC/PO, floating point
 (1.5VA)
 35 Second Timing

Compatible with all ESP and standard zone panels

ZONE CONTROL MADE SIMPLE

Residential Zoning and Damper Selection Guide



888.359.0362 • www.iohvaccontrols.com



ESP ZONE PANELS

NO BYPASS REQUIRED!

2 ZONES



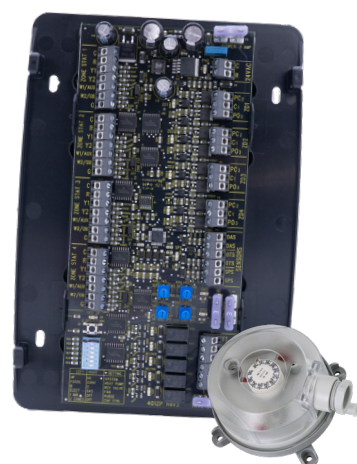
ZP2-HC-ESP
(1 Heat / 1 Cool)

3 ZONES

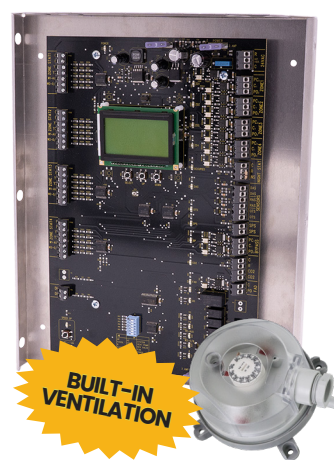


ZP3-ESP
(Up to 3 Heat / 2 Cool,
Heat Pump or Dual Fuel)

4 ZONES

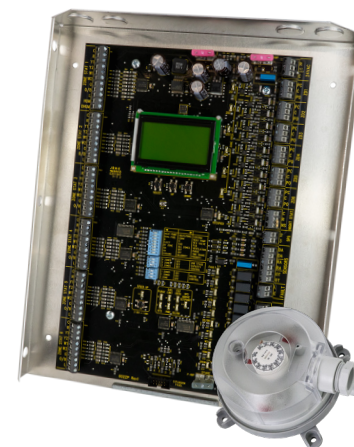


ZP4-ESP
(Up to 3 Heat / 2 Cool, Heat Pump
or Dual Fuel)



ZP4-ESP-FAV
(Up to 3 Heat / 2 Cool, Heat Pump
or Dual Fuel)

6 ZONES



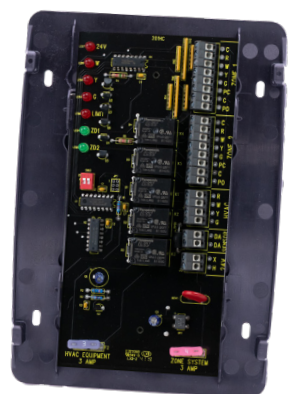
ZP6-ESP
(Up to 4 Heat / 2 Cool,
Heat Pump or Dual Fuel)

All of our ESP zone panels are equipped with our award-winning electronic static pressure control technology. As zone dampers open and close, the static pressure sensor continuously monitors the system static pressure. If the static pressure goes above the static pressure setpoint, the panel will open the non-calling zones just enough to relieve the excess pressure and bring the system below the desired setpoint. This eliminates the need for a bypass damper. *The static pressure sensor is included.*

The ZP6-ESP is a 6 zone, two-position forced air zone control panel. The panel can be used with single-stage, multi-stage, heat pump or dual fuel equipment with up to 4 stages of heating and 2 stages of cooling. Slide switch or push button configuration makes setup quick and easy. Features a built-in ESP static pressure control which eliminates the need for a bypass damper.

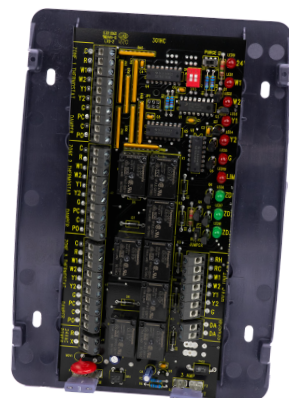
STANDARD ZONE PANELS

2 ZONES



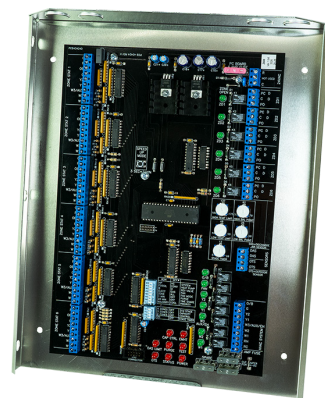
ZP2-HC (1 Heat / 1 Cool)

3 ZONES



ZP3-HCMS (Up to 2 Heat / 2 Cool)
ZP3-HPS (Up to 3 Heat / 2 Cool,
Heat Pump or Dual Fuel)

6 ZONES



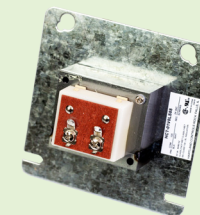
ZP6 (Up to 3 Heat / 2 Cool,
Heat Pump or Dual Fuel)
ZP6-EP Expansion Panel for
ZP6 (9 or 12 zones)

ADDITIONAL PRODUCTS



Discharge and Return Air Sensor
ZPA-DTS

Transformers
TR-40 (40VA)
TR-75 (75VA)



Outdoor Temperature Sensors
ZPA-OTS
ZP3-OTS

ZONE PANEL FEATURES

| | ZP2-HC | ZP3-HCMS | ZP3-HPS | ZP6 | ZP2-HC-ESP | ZP3-ESP | ZP4-ESP | ZP4-ESP-FAV | ZP6-ESP |
|--|--------|----------|---------|-----|------------|---------|---------|-------------|---------|
| TWO-POSITION CONTROL | ✓ | ✓ | ✓ | ✓ | ✓ | ✓ | ✓ | ✓ | ✓ |
| NUMBER OF ZONES | 2 | 3 | 3 | 6 | 2 | 3 | 4 | 4 | 6 |
| HEAT / COOL PANEL | ✓ | ✓ | | ✓ | ✓ | ✓ | ✓ | ✓ | ✓ |
| HEAT PUMP PANEL | | | ✓ | ✓ | | ✓ | ✓ | ✓ | ✓ |
| HEATING STAGES | 1 | 2 | 3 | 3 | 1 | 3 | 3 | 3 | 4 |
| COOLING STAGES | 1 | 2 | 2 | 2 | 1 | 2 | 2 | 2 | 2 |
| STAGING BY THERMOSTAT | ✓ | ✓ | ✓ | ✓ | ✓ | ✓ | ✓ | ✓ | ✓ |
| STAGING BY TIMER | | | | ✓ | | | | ✓ | ✓ |
| CAPACITY CONTROL | | | | ✓ | | | | | ✓ |
| BUILT-IN DUAL FUEL KIT | | | ✓ | ✓ | | ✓ | ✓ | ✓ | ✓ |
| AUTO CHANGEOVER | ✓ | ✓ | ✓ | ✓ | ✓ | ✓ | ✓ | ✓ | ✓ |
| FIRST CALL PRIORITY | ✓ | ✓ | ✓ | | ✓ | ✓ | ✓ | ✓ | |
| COOLING PRIORITY | | | | ✓ | | | | | ✓ |
| MAJORITY WINS PRIORITY | | | | ✓ | | | | | ✓ |
| TIME SHARE | ✓ | ✓ | ✓ | ✓ | ✓ | ✓ | ✓ | ✓ | ✓ |
| HI / LOW LIMIT SENSOR | ✓ | ✓ | ✓ | ✓ | ✓ | ✓ | ✓ | ✓ | ✓ |
| INDEPENDENT FAN MODE | ✓ | ✓ | ✓ | ✓ | ✓ | ✓ | ✓ | ✓ | ✓ |
| SYSTEM STATUS LEDS | ✓ | ✓ | ✓ | ✓ | ✓ | ✓ | ✓ | ✓ | ✓ |
| SHORT CYCLE PROTECTION | ✓ | ✓ | ✓ | ✓ | ✓ | ✓ | ✓ | ✓ | ✓ |
| TIME DELAY OVERRIDE | | | | ✓ | ✓ | ✓ | ✓ | ✓ | ✓ |
| PURGE CYCLE | | ✓ | ✓ | ✓ | | ✓ | ✓ | ✓ | ✓ |
| 2-WIRE DAMPERS | ✓ | ✓ | ✓ | ✓ | ✓ | ✓ | ✓ | ✓ | ✓ |
| 3-WIRE DAMPERS <small>(MUST BE USED FOR ESP FUNCTION)</small> | ✓ | ✓ | ✓ | ✓ | ✓ | ✓ | ✓ | ✓ | ✓ |
| DOUBLE FUSED | ✓ | ✓ | ✓ | ✓ | ✓ | ✓ | ✓ | ✓ | ✓ |
| FAULT SIGNAL | | | | | | | | | ✓ |
| DS/BK CONTROL | | | | | | | | | ✓ |
| NIGHT STAT OPTION | | | | | | | | | ✓ |
| 10 YEAR WARRANTY | ✓ | ✓ | ✓ | ✓ | ✓ | ✓ | ✓ | ✓ | ✓ |

*6 zone ESP panel has up to 4 heating stages